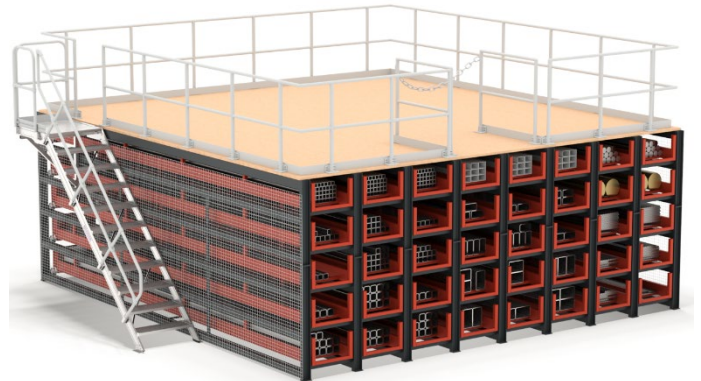


Honeycomb Rack Type WR

You adress:
Contact:
Phone*:
E-Mail*:
If you have any questions, please do not hesitate to contact us! +49 4126 / 39 68 - 0



Honeycomb + warehouse stage

Please enter the relevant data *

** Result from the effective dimesnsions. Only fill in if necessary!

Number of racks: *	Piece	
Number of Columns: *	Piece	
Number of cassettes per Column: *	Piece	
Payload per cassette: * max. 3000kg	kg	
Long material length: *	mm	
Effective shelf width (FNB): * <i>Standard 500</i>	mm	
Effective shelf height (FNH): * <i>Standard 300</i>	mm	
Max. height top cassette: ** <i>Standard 2090</i>	mm	
Overall rack dimensions: ** width x height x depth	mm	



Pullout. Device:
Pramac Forklift

Standard colour frame: * <i>Possible without surcharge</i>	<input type="checkbox"/> RAL 7016 <input type="checkbox"/> RAL 5010 <input type="checkbox"/> RAL 2002 <input type="checkbox"/> RAL 7035 <input type="checkbox"/> RAL 5012
Standard colour cassette: * <i>Possible without surcharge</i>	<input type="checkbox"/> RAL 7016 <input type="checkbox"/> RAL 5010 <input type="checkbox"/> RAL 2002 <input type="checkbox"/> RAL 7035 <input type="checkbox"/> RAL 5012
Desired colour frame:	RAL
Desired colour cassette:	RAL

Additional options:	
Roof storage: <input type="checkbox"/>	kg
Warehouse stage <input type="checkbox"/> Payload max. 1000kg/m²	kg/m ²
Payload warehouse stage: max. 1000	kg/m ²
Pallet transfer station <input type="checkbox"/>	

Specials:

